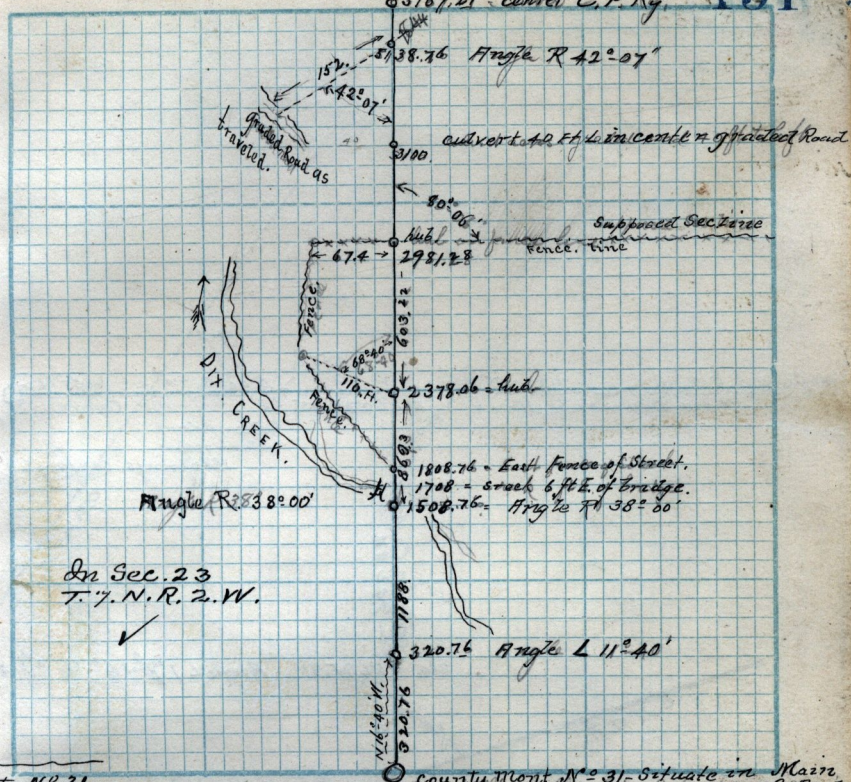


Aug. 8-1890.



In Sec. 23
T. 7. N. R. 2. W.

ties to N^o 31
SW 44. 3/4 Pole

N.W. 109.15 Poplar trees on West side of Street
N.E. 90.± " " " East " " "

County Mont. N^o 31. Situated on Mazez
County Harrisville Road. Center of Road
to Plain City. Center of
C. R. Harrisville St. to Plain City

- to here - ✓

continued on next page

